




# B&C SIROCCO /KIDS - BS08

## LIGHT WEIGHT JACKET / WITHOUT LINING



### The Market Reference Windbreaker

-  100% nylon taffeta
-  3/4 - 5/6 - 7/8 - 9/11 - 12/14
-  10 pcs/pack & 50 pcs/carton



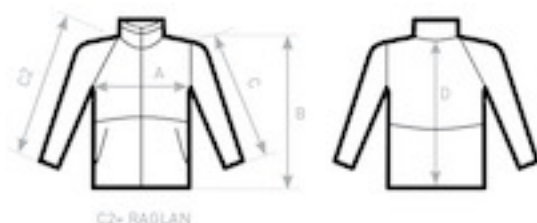
-  Windproof
-  Showerproof
-  Water-repellent

- Full zip opening with zip pull
- Adjustable storm hood concealed inside the collar
- Fold-away jacket (K-way® system) in pocket with double slider zip
- Adjustable bottom hem with drawcord



DUO  
CONCEPT

B&C Sirocco &  
B&C Sirocco /women



### SIZES [CM]

B&C SIROCCO /KIDS JK 950	1/2	3/4	5/6	7/8	9/11	12/14
A HALF CHEST	-	41	44	47	51	55
B BODY LENGTH FROM NECK POINT	-	48	52	56	61	66
C SLEEVE LENGTH	-	38	41	44	47	50
D CENTER BACK LENGTH	-	48	52	56	61	66

B&C  
COLLECTION  
**OUTER  
WEAR  
/UNIT**