





HEAVY WEIGHT JACKET / PARKA



Warm & comfortable multi-activity winter parka

-  **OUT:** 100% Oxford polyester | Waterproof 1000 MM
- IN:** 100% polyester taffeta quilt padding
100% polyester anti-pilling micro-fleece (180 g/m²) on top back panel and collar
-  XS - S - M - L - XL - 2XL
-  1 pc/pack & 10 pcs/carton

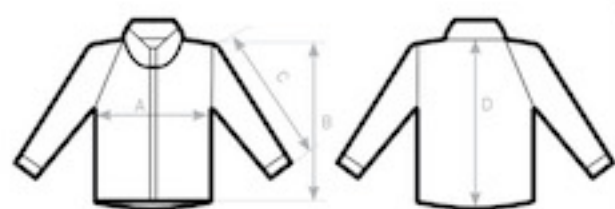


-  Windproof
-  Thermo-insulated
-  Waterproof
-  ANTI PILLING Anti-pilling micro-fleece
-  Water-repellent
-  Critical seams taped
-  Feminine cut

- Concealed 3 panelled hood with eyelets and flat drawstring with plastic ends
- Full front zip fastener with stormflap
- Ergonomic sleeves & articulated elbow for ease of movement
- 2 front zipped pockets
- 1 inner zipped wallet pocket
- Adjustable cuffs



DUO CONCEPT
with B&C Real+ /men



SIZES [CM]

B&C REAL+ /WOMEN JW 925	XS	S	M	L	XL	2XL	3XL
A HALF CHEST	52,9	55,9	58,9	61,9	65,9	69,9	-
B BODY LENGTH FROM NECK POINT	73,5	75	76	77	79	81	-
C SLEEVE LENGTH	61,8	62,7	63,7	64,6	66,2	67,8	-
D CENTER BACK LENGTH	71,0	72,1	73,2	74,3	76,1	77,9	-

OUTER WEAR /UNIT